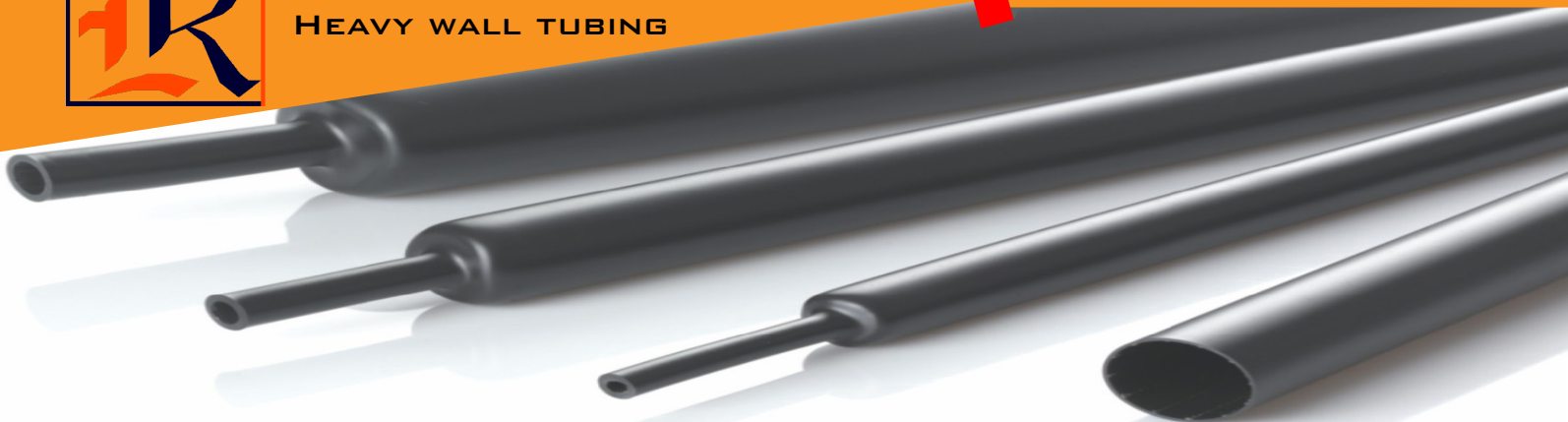




TRA3/TR3

HEAVY WALL TUBING

TRANSEAL™



Shelf Life & Storage: Heat Shrink Product provided by TRANSEAL has a over 5 year's shelf life from date of manufacture when stored in a humidity controlled environment (-10°C to 40°C and <75% relative humidity).

Ordering Information: Standard Color : Black

Features: Dual Wall, hot melt adhesive inner lined (TRA3) UV Resistant
 Semi-rigid, Flammable, Shrink ratio 3:1 Min. full recovery temp. 120°C.
 Supply in cut piece with max. 1.5m in length



D* = Inner diameter as supplied
 d* = Inner diameter after fully recovered
 W* = Outer Layer Wall thickness after fully recovered

Typical Technical Performances		
Test Items	Test method	Test Requirements
Tensile Strength	ASTM D 2671	12 Mpa min.
Ultimate Elongation	ASTM D 2671	350% min.
Tensile Strength after Aging at 150°C for 168 Hours	ASTM D 2671	12 Mpa min.
Ultimate Elongation after Aging at 150°C for 168 Hours	ASTM D 2671	300% min.
Density	ASTM D 792	1.0-1.1 g / cm ³
Dielectric Strength	ASTM D 60243	12 KV / mm (2mm) min.
Volume Resistivity	ASTM D 2671	10 ¹² Ω-cm min
Low Temperature flexibility -40°C / 4 Hours	ASTM D 2671	No cracking of outer jacket
Properties of hot melt adhesive		
Softening Point	ASTM E28	85 +/- 5°C (TRA2/TR2)
Peel Strength (PE)	ASTM D 2671	4N / cm min.
Water Absorption	ISO 62	0.2% max.

Size	As Supplied (mm)	After recovered (mm)		Standard Length
	D* (Min.)	d* (Max.)	W* (Min.)	(m)
TRA3 Heavy Wall Tubing with hot melting adhesive				
9/3	9	3	2.0	1.0-1.5
15/4	15	4	2.4	1.0-1.5
22/6	22	6	2.7	1.0-1.5
33/8	33	8	3.2	1.0-1.5
45/12	45	12	4.0	1.0-1.5
55/16	55	16	4.0	1.0-1.5
65/19	65	19	4.0	1.0-1.5
75/22	75	22	4.0	1.0-1.5
85/25	85	25	4.2	1.0-1.5
95/29	95	29	4.2	1.0-1.5
105/25	105	25	4.5	1.0-1.5
115/34	115	34	4.2	1.0-1.5
130/36	130	36	4.2	1.0-1.5
180/50	180	50	4.2	1.0-1.5
200/60	200	60	4.2	1.0-1.5
235/65	235	65	4.4	1.0-1.5
265/75	265	75	4.8	1.0-1.5
300/85	300	85	4.8	1.0-1.2
350/100	350	100	4.8	1.0-1.2
385/110	385	110	4.8	1.0-1.2

Size	As Supplied (mm)	After recovered (mm)		Standard Length
	D* (Min.)	d* (Max.)	W* (Min.)	(m)
TR3 Heavy Wall Tubing without hot melting adhesive				
9/3	9	3	2.0	1.0-1.5
15/4	15	4	2.4	1.0-1.5
22/6	22	6	2.7	1.0-1.5
33/8	33	8	3.2	1.0-1.5
45/12	45	12	4.0	1.0-1.5
55/16	55	16	4.0	1.0-1.5
65/19	65	19	4.0	1.0-1.5
75/22	75	22	4.0	1.0-1.5
85/25	85	25	4.2	1.0-1.5
95/29	95	29	4.2	1.0-1.5
115/34	115	34	4.2	1.0-1.5
130/36	130	36	4.2	1.0-1.5
180/50	180	50	4.2	1.0-1.5
200/60	200	60	4.2	1.0-1.5
235/65	235	65	4.4	1.0-1.5
265/75	265	75	4.8	1.0-1.5
300/85	300	85	4.8	1.0-1.2